

 neftgen

**MOBILE FUEL STATIONS**

**SAFE \* FAST \* EASY**





Portable



European Standards



Fast Installation



Flexible Design

Neftgen Mobile Fuel Station offer safe, dynamic and low-cost solutions with a very easy and fast installation. Containerized Fuel Station Systems are an alternative to fuel stations and can be used for the sale of different types of fuel such as gasoline, diesel, LPG and Adblue. Systems can be equipped with various types of tanks, pumps and additional features. 20 feet, 40 feet and high cube container fuel stations (Mobile Fuel Station) can be equipped with, different capacities and 1,2 or 4 fuel dispensers. Dispensers can be both suction and pressure type. Mobile Fuel Station can be supplied in 40 feet or 20 feet ISO containers. Mobile fuel stations are suitable for ocean transport. BIC, SOC and CSC (Container Safety Certificate) for maritime transportation.

Tanks can be produced according to EN12285 European Standards or UL145 (Underwriters Laboratories) Autoneft Fuel Management System, allows customers to monitor all sales and fuel level remotely. We are able to provide Inspection Reports from leading inspection companies like SGS, Bureau Veritas, TUV etc

### General Features

- ✓ Standard ISO Containers (20' – 40' HC)
- ✓ EN 12285-2 Certified Storage Tank
- ✓ Single / Double Wall Tank
- ✓ CSC plate – BIC CODE
- ✓ Atex Certified Dispenser / Pump
- ✓ Standard flow dispenser 40 lpm
- ✓ 1 or 2 Products
- ✓ Alarm Systems
- ✓ Illumination
- ✓ Electric Box
- ✓ Vent valve
- ✓ Steel Piping
- ✓ Suction accessories
- ✓ Mechanic level gauge



### Optional Features

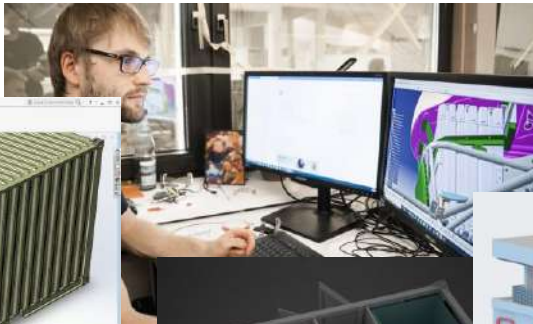
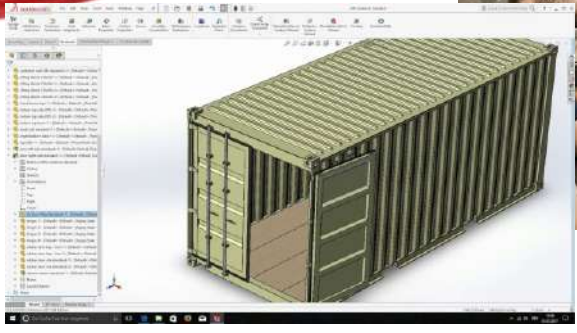
- ✓ Automatic Tank Gauging
- ✓ Pump Automation
- ✓ Vehicle Identification – Mifare cards
- ✓ Remote monitoring of tank level and sales
- ✓ Isolation
- ✓ Hi-Flow dispenser (70 lpm / 120 lpm)
- ✓ Tank filling transfer pump
- ✓ Leak Detection Systems
- ✓ Generator room
- ✓ Operator room / office
- ✓ Leak detection system
- ✓ Fuel filtration
- ✓ Generator
- ✓ Air conditioner



MobilContainers	Types	Descriptions
SM-C-20-1T	20ft Container	single tank – 1x25m3
SM-C-20-2T	20ft Container	double tank – 2x12m3
SM-C-20-1T-O	20ft Container	single tank – 1x20m3 + 2m2 office
SM-C-20-2T-O	20ft Container	double tank - 2x10m3 + 2m2 office
SM-C-40-1T	40ft Container	single tank – 1x50m3
SM-C-40-2T	40ft Container	double tank – 2x24m3
SM-C-40-1T-O	40ft Container	single tank – 1x40m3 + 4m2 office
SM-C-40-2T-O	40ft Container	double tank - 2x20m3 + 4m2 office







## PRODUCTION



## CERTIFICATION

The image shows three main certification documents:

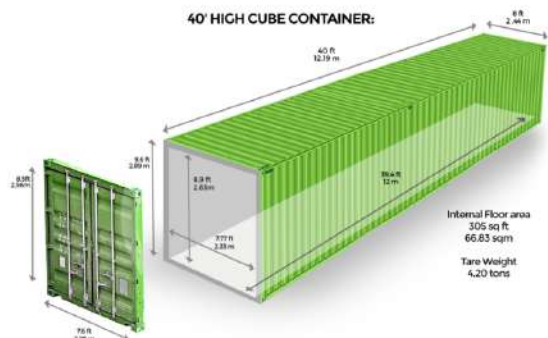
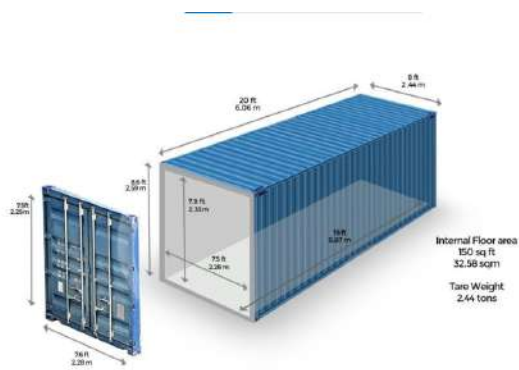
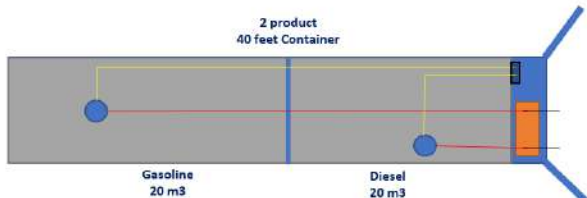
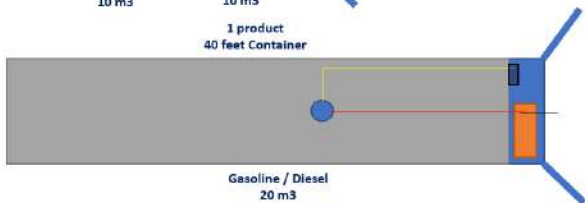
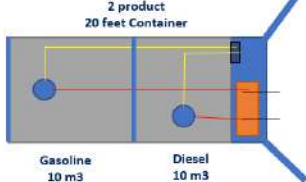
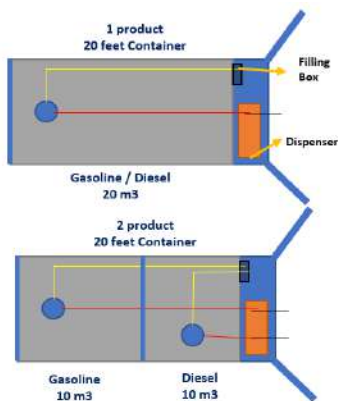
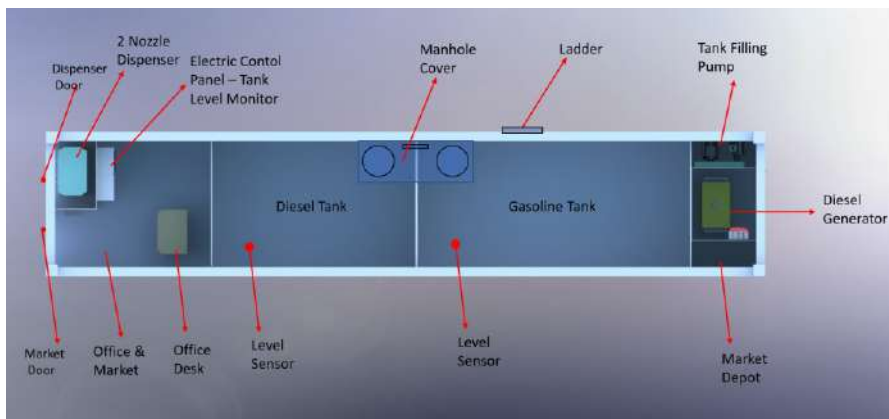
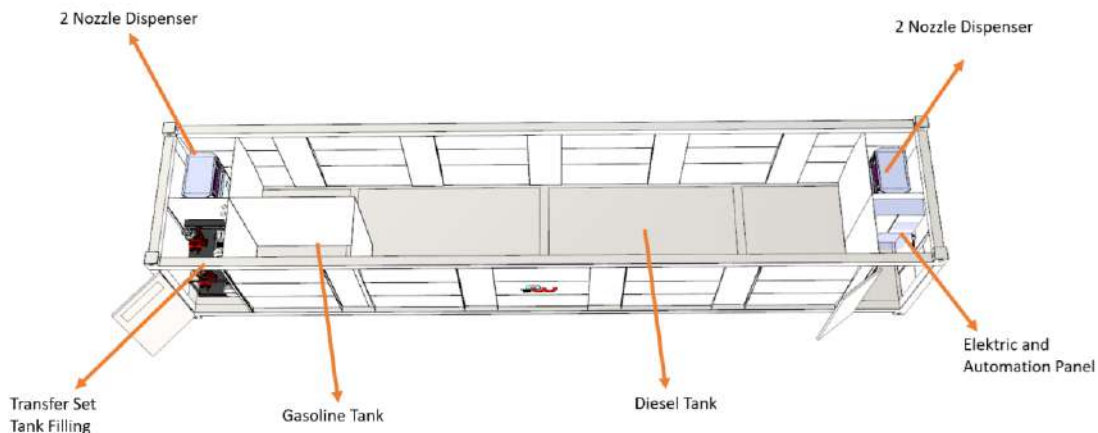
- Bulgarian Register of Shipping (BULGARIJSKI KOPANEN PREGLED):** A certificate for a product, issued by the Energy Petroleum Institute (EPI) in Sofia, Bulgaria.
- ISO 9001:2015:** A Quality Management System Certificate issued by TÜRK STANDARDLARI ENSTİTÜSÜ (TSE) in Ankara, Turkey.
- TSE Certificate:** A certificate of conformity to Turkish Standards (TSE) issued by TÜRK STANDARDLARI ENSTİTÜSÜ.







# SAMPLE DESIGNS





## Sample System Features

### General Specifications

#### Usage Areas

Seasonal Requirements; (Holiday spots, marinas, agricultural areas, etc.)  
 Private Events & Organizations (Motor sports, etc),  
 Construction Sites,  
 Mining Industry,  
 Fuel supply for large fleets and in-house refueling sites (big corporations, transportation companies, etc.),  
 Forecourts on which installation, revision and maintenance operations are conducted.

#### Technical Specifications:

#### Dimensions:

load-carrying-system construction, consisting of stable frame structure with 8 pieces ISO-corners  
 Double walled (40ft: 6 mm inside layer + 4 mm outside layer, 20ft and 10ft: 5 mm inside layer + 3 mm outside layer)  
 Robust, cubic, double wall body of steel, material: S 235 JRG 2  
 Corrosion protection: KT4S-Coating. Protection to sea-water and UV. RAL codes are applied according to customer requirements.  
 Light and sealing door (double winged ) for dispensing niche: height 2.000 mm x width 2.000 mm 4 flange connections (2 suction/2 reserve)  
 1 x 2" ventilation connections DN 50, a vent hood 2" - (diesel)  
 1 x 2" ventilation connections DN 50, a vent hood 2" - exproof (gasoline)  
 Dispensing niche: width 2.000 mm x depth 1.000 mm x height 2.000 mm  
 Electrical niche: depth 700 mm x width 1000 mm x height 2000 mm  
 5m<sup>2</sup> / 2m<sup>2</sup> office room within light, 3-point electrical socket, sealing door and window.  
 Generator niche within sealing door and light.  
 Fuel dispenser - 1x 50lt/min.  
 Fuel transfer set, 600 / 300Lt/min.  
 Single wall plated carbon steel tank.  
 3" fuel filling entrance(Cam Lock) / Overfilling protection.  
 Integrated ladder and sunshield for top of container access.  
 Ex-proof lamp for dispensing niche and filling niche.

#### Fuel Dispenser within 2 products – 2 nozzles

With OIML type approval, EMC tested , ATEX certified  
 Media: Diesel and Gasoline  
 Liter, Price, Rate on Display - Delivery rate 5 - 50 ltr./min. (standard) or 9 - 90 ltr./min. (high efficient) (flow rate will be set with customers wish in our workshop)  
 Hose length 1: 4 m with automatic nozzle  
 Quantity preselection: price or liter

#### Service Stations Gas Station / Petrol Fuel Station

The tank station can be equipped as a complete gas station | service station for cars, trucks and diesel locomotives or as tank container for yachts and boats.  
 The tank station can also be applied as airfield gas station (gas station/service station for helicopters).  
 International transportation permission for ship, rail and road. (CSC) (Container Safety Convention )Extremely robust and high static firmness.  
 Double walled structure with vacuum leakage indicator.  
 Protective arrangement of the equipment inside the tank body.

#### Equipments:

2 x filling system for tank cars DN 50 with road tanker connection VK 50 and non-return valve, ball valve  
 2 x level limiter with type approval in EX (by version with transfer pump, the pipework for the filling system is mounted at the transfer niche)  
 2 x suction pipe 1 1/2" with non-return valve and ball valve 2 x return pipe  
 Lamp, switch, emergency stop (in EX)  
 Pedestal for dispensing units  
 Non-slip surface at the bottom of the niche  
 Transfer pump EX/ATEX 600 l/min with extra niche and door 400 V/AC  
 Diesel Generator 5 / 10,5 Kw

## MobilBasic Outdoor Cylinder Open Type Mobile Fuel Solutions



MobilBasic Outdoor Models	Type	Explanation
SMO-05	Mobile Fuel Station	Mobile 5.000 Lt.
SMO-10	Mobile Fuel Station	Mobile 10.000 Lt.
SMO-15	Mobile Fuel Station	Mobile 15.000 Lt.
SMO-20	Mobile Fuel Station	Mobile 20.000Lt
SMO-25	Mobile Fuel Station	Mobile 25.000 Lt.
SMO-30	Mobile Fuel Station	Mobile 30.000 Lt.
SMO-40	Mobile Fuel Station	Mobile 40.000 Lt.
SMO-50	Mobile Fuel Station	Mobile 50.000.Lt

### General Specifications

#### Usage Areas

Seasonal Requirements; (Holiday spots, marinas, agricultural areas, etc.)

Private Events & Organizations (Motor sports, etc),

Construction Sites,

Mining Industry,

Fuel supply for large fleets and in-house refueling sites (big corporations, transportation companies, etc.),

Forecourts on which installation, revision and maintenance operations are conducted.



# MobilBowser

## Road Type Mobile Solutions



MobilBowser Models	Type	Explanation
SMB-10-S/T	Mobile Fuel Station	Mobil Bowser, Single/Twin Axle 1m3 Tank
SMB-20-S/T	Mobile Fuel Station	Mobil Bowser, Single/Twin Axle 2m3 Tank
SMB-30-S/T	Mobile Fuel Station	Mobil Bowser, Single/Twin Axle 3m3 Tank
SMB-50-S/T	Mobile Fuel Station	Mobil Bowser, Single/Twin Axle 5m3 Tank
SMB-100-S/T	Mobile Fuel Station	Mobil Bowser, Single/Twin Axle 10m3 Tank
SMB-150-S/T	Mobile Fuel Station	Mobil Bowser, Single/Twin Axle 15m3 Tank

### General Specifications

#### Standard specification

- Fully baffled and pressure tested inner tank
- Tough, fully galvanised tubular steel chassis
- Lockable cabinet to protect fuel dispensing equipment and inlets/outlets to the tank
- High speed axles for improved stability
- Fully sealed magnetic drive tank contents gauge
- GPI alloy bodied hand pump with a maximum flow rate of 95 litres/min
- Fuel filter with replaceable element and water drain point
- Large 5 stud braked hubs for long service life
- Fitted with automatic breather and pressure relief valve
- High performance Radial tyres give excellent stability
- Tough galvanised mudguards and lighting board

#### Product information

Built in accordance with the ADR fuel transportation regulations and with full U.N. certification, the 1000 and 2000 litre highway bowzers provide an ideal solution for transporting fuel on the highway. The fully banded tank is constructed from steel throughout and is seated on a tough galvanised tubular steel chassis. Highway specific features include handbrake and hydraulically damped overrun braked hitch, with mudguards, lights and high speed specification axles and tyres. The inner tank features a baffled design to ensure the tank is stable when on the road. The delivery equipment and inlets/outlets to the inner tank are housed in a secure, lockable cabinet at the rear of the tank. For use with diesel and gas oil.



OPTIONS



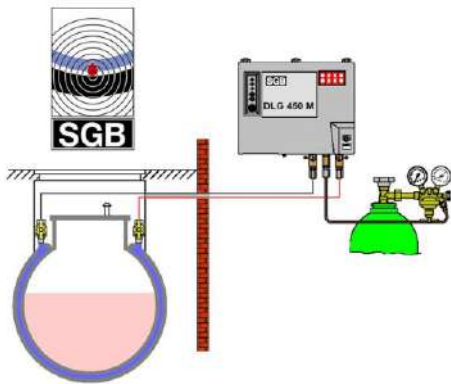
Tank Filling Pump



Submersible Pump



Diesel Generator



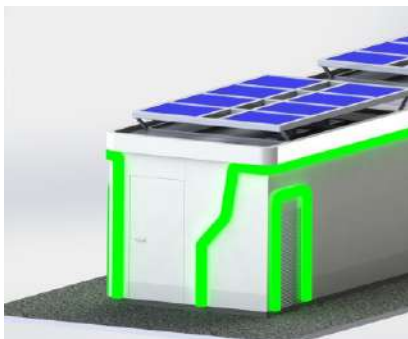
Tank Leak Detector



Siren



Gas Detector



Solar Energy



Filtration System



Heat Isolation

## Transportation of Systems



World wide easy and low-cost transport by truck, rail and ship due to international ISO-container- measurements



# FUEL MANAGEMENT SYSTEM

**Neftgen Fuel Management**, allows you to monitor your sales and tank level, through an industrial touch panel, mounted on the dispenser. With the card reader feature, only authorized persons can use the dispenser. All information can be viewed and reported by remote monitoring feature, via wi-fi or Gsm module. Only needs two wires, one from dispenser and one from level probe.

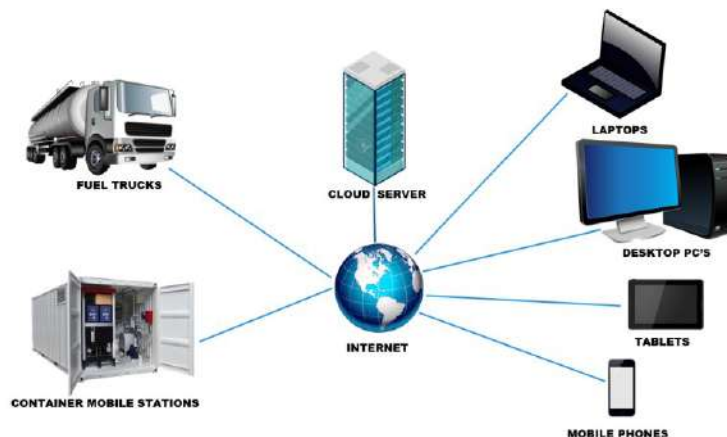


## MATRIX Q3 Automation Panel – Card Reader

- ✓ Can be connected to 1 pump + 1 tank stations
- ✓ 4,3'' Resistive graphic screen with touch panel
- ✓ 2 x RS485 ports
- ✓ Can read mifare RFID cards and tags (13,56 Mhz)
- ✓ No wiring and panel installation
- ✓ Resistant to daylight, humidity and temperature
- ✓ Access Quantum Cloud Servers with local wifi network
- ✓ Store 500 mifare RFID cards and tags ID's
- ✓ Record all sales and stock datas (even when offline)
- ✓ Send all datas to Quantum Cloud Servers, when online.
- ✓ Easy installation and usage
- ✓ Available for various fuel pump brands
- ✓ Optional GSM/GPRS module for lack of wi-fi conditions



Several fuel trucks or mobile gas stations, can be monitored from computers and mobile devices via Quantum Cloud Servers for 365 days 24 hours.





Get in touch with us

 neftgen

