

icon

Containment Solutions

*The World's Leading UST and AST
Containment Leak Repair Products*



Highly effective and lasting solutions for spill containment, tank, transition, and dispenser sump leaks in UST / AST systems.

Watertight covers and sump lids for surface water leaks

(See pg. 3)

SplitRepair fittings for leaking fittings of all types

(See pg. 4-6)

Structural repair for sump cracks, holes, and seam leaks

(See pg. 6-7)

Instant water blocking for active water intrusion

(See pg. 8)

Corrosion prevention for STP and other equipment

(See pg. 8)





- The next generation in watertight composite design
- All non-corrosive & non-conductive materials
- Best in class anti-slip and anti-skid surface
- EN124-D400/C250, H20/25 load ratings compliant
- 42", 36", 30", and 24" clear openings, round design
- Extremely low-maintenance
- Easy installation and removal
- Industry first **15-year warranty!**



EasyFit
Sump Lid

- Truly watertight & low-profile design
- Bonded attachment to **any** existing sump top
- Works for all manufactured poly or fiberglass sumps
- Cam-Lock lid-attachment for easy removal and sure seal
- Strong and lightweight fiberglass design
- Replaces lids in sizes from 24" to 36" or larger
- **5-year warranty!**





SplitRepair Compression Fittings



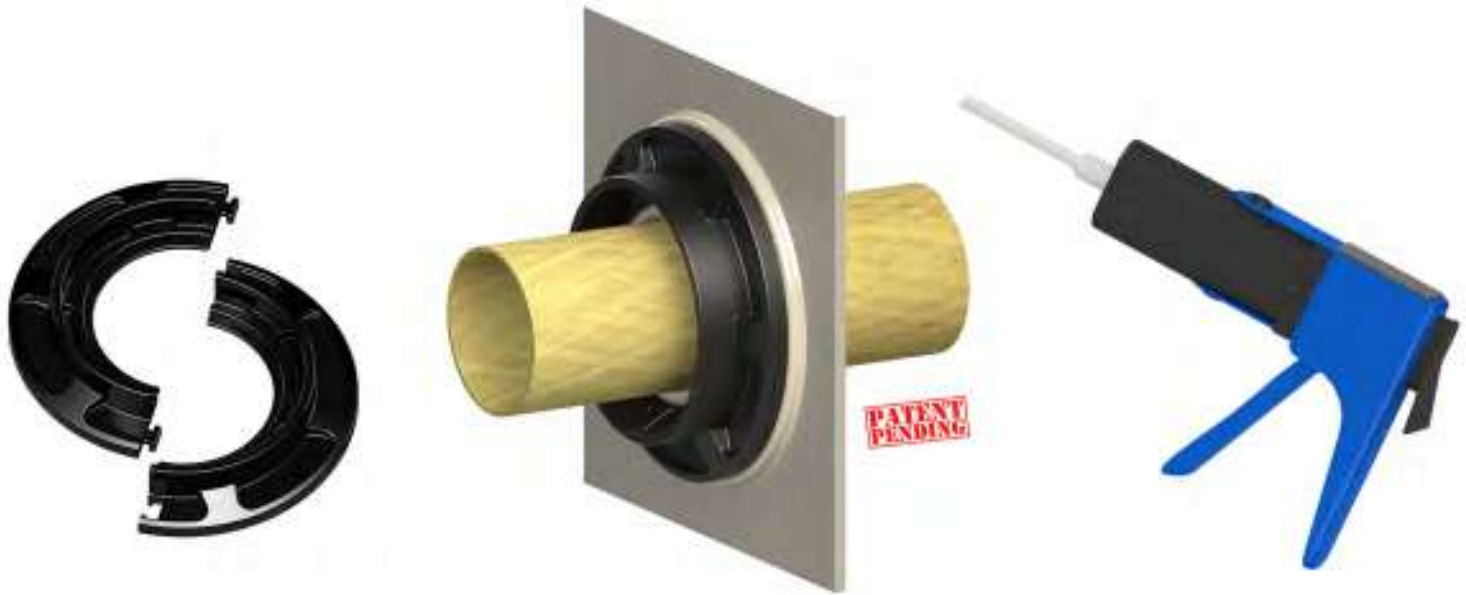
Icon ProTex material (non-urethane), flexible design compression seal fittings will last through the end-life of the sump!

- 3rd-party tested to UL2447 requirements, All-fuels compatible
- Effective repair for all manufactured sump entry and test-fittings, in any combination of equipment (sump, fitting, pipe)
- Disconnection of sump entry pipe or excavation rarely required





SplitRepair Bonded Fittings



Icon Rigid bonded seal fittings are permanent and warranted through the end life of the sump!

- 3rd-party tested to UL2447 requirements, All-fuels compatible
- Permanently bonds to FRP, steel, and concrete sump and pipe surfaces
- Lighter materials and dispensed bonder for easier, faster installation
- Innovative design provides an effective and lower cost solution





SplitRepair Test Fittings & Secondary Line Testing Kits



- Pre-assembled and ready for use
- Standard kits or custom configurations available
- Cost competitive, lasting and durable materials
- Test fittings in all sizes for all pipe designs
- Install and start testing in 60 minutes

NEW!
Barb Valve
Option
Available

FastFix Structural Repair Patch



- 15 minute, UV-cured fiberglass patch kit
- Permanent repair over holes, cracks, or other damage
- Easy peel and stick application, no mess
- All fuels compatible; third-party tested
- 2,200 psi bonded strength after cure
- Consistent quality and thickness



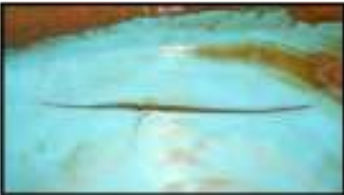


iBond Structural Repair Bonder



- Permanent bonding to FRP, concrete, and steel surfaces
- Dispensed, not hand-mixed, for easier and cleaner placement
- Completely cures in as little as 15 minutes, and ready for testing
 - All fuels compatible; third-party tested
- Consider repair before expensive sump replacement

PolyFuse Structural Repair Bonder



- Permanent bonding to HDPE surfaces
- Dispensed, not hand-mixed, for easier and cleaner placement
- Excellent for repair of minor crack, seam leak, and damage to poly sumps and spill containment
 - Direct technical support and training available for all applications
- Sufficiently cured for testing in as little as 6 hours, depending upon conditions





FastFoam & WetWeld Instant Water Blocking



- Stops active water leaks in seconds for a temporary block that allows for a permanent repair to be made
- Applied from inside the sump directly to fitting, crack, hole, and seam leaks
- May eliminate the need to pump down the water table
- Inexpensive and effective spot treatments

PetrolSeal Corrosion Preventing Sealant



- Protects and seals STP and other metal components from premature and costly corrosion
- Low-cost and simple solution with long-term effectiveness when applied with neutralizer kit
- Extend the life of your expensive sump equipment
- 5-year Warranty

